



**2022**  
**RACK CABINETS AND**  
**METAL ENCLOSURES**



## **CONTENTS**

**WALL MOUNT CABINET- SOHO CABINET**  
**WALL MOUNT CABINET - EUROBOX CABINET**  
**WALL MOUNT CABINET - PROLINE CABINET**  
**WALL MOUNT CABINET - DVR NETWORK CABINET**  
**WALL MOUNT CABINET - SLIMLINE CABINET**  
**WALL MOUNT CABINET - SLIMBOX CABINET (SLIM DESIGN)**  
**WALL MOUNT CABINET - SLIMBOX CABINET (W=500 mm)**  
**WALL MOUNT CABINET - SLIMBOX CABINET (DISTRIBUTION RACKS)**  
**NETWORK CABINET - FREE STANDING CABINET**  
**METAL ENCLOSURE - FREE STANDING COUNTER PANEL**  
**METAL ENCLOSURE - METER BOARD**  
**METAL ENCLOSURE - SATELLITE AND DATA CROWN ENCLOSURE**  
**METAL BOARD - AGRICULTURAL IRRIGATION BOARD**  
**6/8 PORT WALL MOUNT TERMINATION BOXES**  
**RACK ACCESSORIES: PATCH PANELS**  
**RACK ACCESSORIES: CABLE MANAGEMENT**  
**RACK ACCESSORIES: BLANK PANELS**  
**ABOUT US**

## WALL MOUNT CABINET - SOHO CABINET



SOHO rack cabinets are designed with 2 fan slots to control inner ventilation with a brush slit for cable entry at the top and bottom covers of cabinets. It is fitted with an attachment slot on the back to make it easier to install on a wall.



### Specification

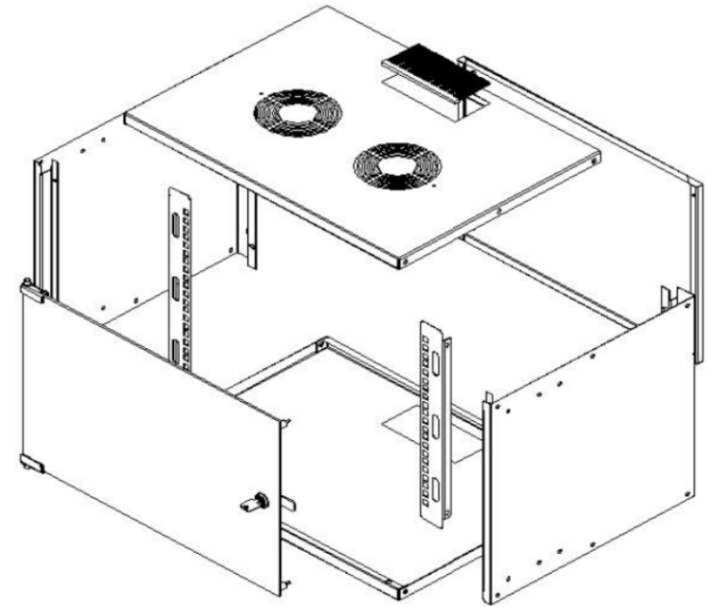
Easily adaptable and suitable esthetical products to use. Protects your devices against dust, liquid, and unauthorized interference.

Size : W600\*D400\*H300 mm

Color : RAL 7035 L-Grey RAL 9035 Black

### Areas of usage

Network access devices (ADSL)  
Wireless Devices (Wireless Modem / Router)  
Camera Recorders (DVR, NVR)  
Telephone connection boxes (Junction box or splitter)  
Hub / Switch  
External hard disk



SOHO Series Wall Mounting 19" Cabinets W=540mm D=400/300mm

Product Number	Product Description	Size WxDxH mm	h Size in U	h in mm	H mm, overall without feet and/or castor	Width Overall mm	Ah Wall Mounting h mm	Width Rail to Rail	Depth Overall mm	Depth Shipping Conf. Rail to Rear Panel mm	QTY IN PACKAGE	PACKING DIMENSIONS WxDxH mm	Standard NET Weight of product kgs	Gross Weight of Product kgs	QTY IN PALETTE	PALETTE DIMENSIONS WxDxH mm	Palette Weight kgs
304-07U5430110	7U 19" Wall Mounting Cabinet W=540 mm D=300 mm	540x300x369	7U	329	369	540	268	19"	300	210	1	565x450x110	7,8	8,8	60	1300x1300x1320	528
304-07U5440110	7U 19" Wall Mounting Cabinet W=540 mm D=400 mm	540x400x369	7U	329	369	540	268	19"	400	310	1	565x450x110	8,7	10	60	1300x1300x1320	600
304-09U5440110	9U 19" Wall Mounting Cabinet W=540 mm D=400 mm	540x400x458	9U	418	458	540	357	19"	400	310	1	565x450x110	10	11,2	60	1300x1300x1320	672
304-12U5440110	12U 19" Wall Mounting Cabinet W=540 mm D=400 mm	540x400x591	12U	551	591	540	490	19"	400	310	1	540x525x110	12,5	13,9	60	1300x1300x1620	834

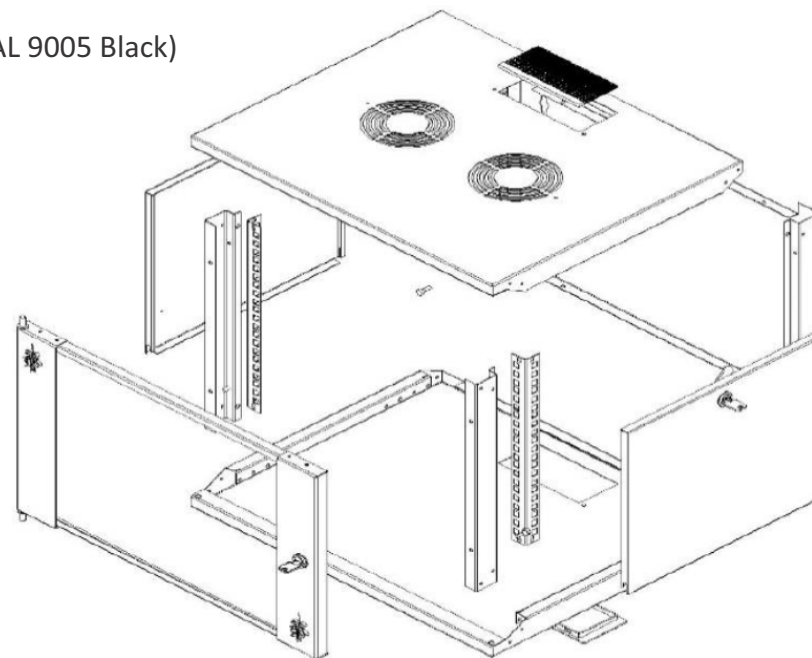
## WALL MOUNT CABINET - EUROBOX CABINET



*EURObox, Multiple cable entry points on top and bottom, providing maximum versatility. Protects your devices against dust, liquid and un-authorized interference. Can be shipped disassembled.*

**Available in two colors:** (RAL 7035 Light Grey) and (RAL 9005 Black)

**Size:** in different U heights: 7U, 9U, 12U, 16U, 20U



Eurobox Series Wall Mounting 19" Cabinets W=540mm D=450/600mm

Product Number	Product Description	Size WxDxH mm	h Size In U	h in mm	H mm, overall without feet and/or castor	Width Overall mm	Ah Wall Mounting h mm	Width Rail to Rail	Depth Overall mm	Depth Shipping Conf. Rail to Rear Panel mm	QTY IN PACKAGE	PACKING DIMENSIONS WxDxH mm	Standard NET Weight of product kgs	Gross Weight of Product kgs	QTY IN PALETTE	PALETTE DIMENSIONS WxDxH mm	Palette Weight kgs
310-07U5445101	7U 19" Wall Mounting Cabinet W=540 mm D=450 mm	540x450x373	7U	333	373	540	268	19"	450	360	1	560x470x400	12,5	12,9	20	1000x1200x2150	278
310-09U5445101	9U 19" Wall Mounting Cabinet W=540 mm D=450 mm	540x450x462	9U	422	462	540	367	19"	450	360	1	560x470x460	14	14,6	16	1000x1200x2000	263
310-12U5445101	12U 19" Wall Mounting Cabinet W=540 mm D=450 mm	540x450x596	12U	555	596	540	490	19"	450	360	1	560x470x595	16,5	17,2	12	1000x1200x1950	226
310-16U5445101	16U 19" Wall Mounting Cabinet W=540 mm D=450 mm	540x450x773	16U	733	773	540	668	19"	450	360	1	560x470x800	18	19	10	1000x1200x2350	210
310-07U5460101	7U 19" Wall Mounting Cabinet W=540 mm D=600 mm	540x600x373	7U	333	373	540	268	19"	600	510	1	560x620x400	15	15,6	20	1100x1300x2150	346
310-09U5460101	9U 19" Wall Mounting Cabinet W=540 mm D=600 mm	540x600x462	9U	422	462	540	367	19"	600	510	1	560x620x460	16,5	17,2	16	1100x1300x2000	300
310-12U5460101	12U 19" Wall Mounting Cabinet W=540 mm D=600 mm	540x600x596	12U	555	596	540	490	19"	600	510	1	560x620x595	20	21	12	1100x1300x1950	277
310-16U5460101	16U 19" Wall Mounting Cabinet W=540 mm D=600 mm	540x600x773	16U	733	773	540	668	19"	600	510	1	560x620x800	23,5	24,7	10	1100x1300x2350	272

## WALL MOUNT CABINET - PROLINE CABINET



### Side Doors

Has locking system.  
Can be easily disassembled.

### Bottom Plate

1 opening for PVC cable with plastic cover.  
Leveling feet can be attached.

### Rear Panel (door)

Several door options 1 opening for PVC cable with plastic cover.  
Can be used as a Rear Panel mounting fixture.

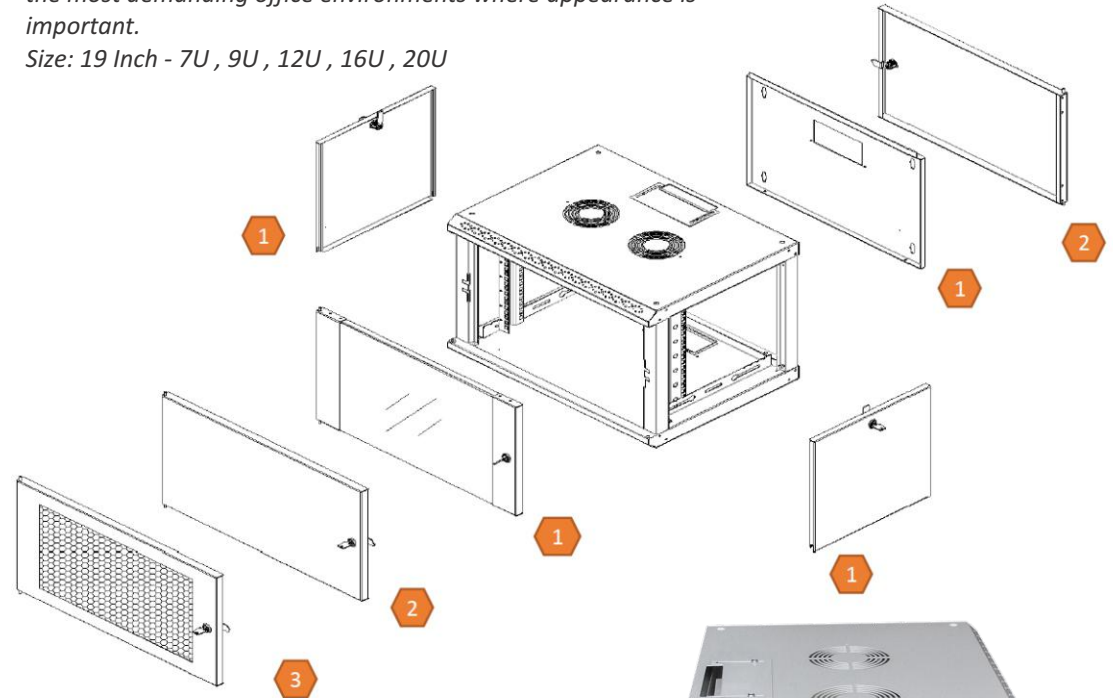
### Front Doors

Several door options Single point locking Doors can be opened up to 236 degrees. Can be opened from the both sides (left and right).

### Interior Parts (19" mounting angles)

Solid metal, 1.5mm DX51D+ZN275  
Zinc plated, galvanized Adjustable in depth.

*Proline series wall mounted enclosure cabinets offer a cost-effective alternative for cabling installations. This series is utilized in workplaces for horizontal parts where a low U height is necessary while maintaining an appealing and professional appearance. Cabinets in RAL 7035 with left and right metal frames can be used in the most demanding office environments where appearance is important.*  
Size: 19 Inch - 7U, 9U, 12U, 16U, 20U



### Material

1mm DKP sheet metal  
1.2 mm DKP sheet metal

### IP Classification

IP 20, Standard  
Ip40 with flat metal cover

### Color Options

RAL 9005 Black  
RAL 7035 Light Grey

### Loading Capacity

Suggested weight load 80 kg

Proline Series Wall Mounting 19" Cabinets W=600mm D=450mm

Product Number	Product Description	Size WxDxH mm	h Size in U	h In mm	H mm, overall without feet and/or castor	Ah Wall Mounting h mm	Width Overall mm	Width Rail to Rail	Depth Overall mm	Depth Shipping Conf. Rail to Rear Panel mm	PACKING DIMENSIONS WxDxH mm	QTY IN PACKAGE	Standard NET Weight of product kgs	Gross Weight of Product kgs
307-07U6045111	7U 19" Wall Mounting Cabinet W=600 mm D=450 mm	600x450x420	7U	311	420	260	600	19"	450	340	660x520x480	1	14,5	17
307-09U6045111	9U 19" Wall Mounting Cabinet W=600 mm D=450 mm	600x450x509	9U	400	509	349	600	19"	450	340	660x520x550	1	17,6	20,1
307-12U6045111	12U 19" Wall Mounting Cabinet W=600 mm D=450 mm	600x450x642	12U	533	642	482	600	19"	450	340	660x520x690	1	22,5	25
307-16U6045111	16U 19" Wall Mounting Cabinet W=600 mm D=450 mm	600x450x820	16U	711	820	660	600	19"	450	340	660x520x870	1	29	32
307-20U6045111	20U 19" Wall Mounting Cabinet W=600 mm D=450 mm	600x450x998	20U	889	998	838	600	19"	450	340	660x520x1050	1	35	38



## WALL MOUNT CABINET - DVR NETWORK CABINET

### DVR network cabinet, wall mount type

#### Features:

- Metal locker for video surveillance with door equipped with double key lock (different keys).
- 36.5 cm long 19 " 1U bracket storage equipment tray, adjustable width (minimum 24 cm, maximum 48 cm).
- L-shaped bracket (minimum 1 cm and maximum 5 cm) for fixing equipment not provided with a 19 " connection.
- Possibility to replace 1U bracket with 2U bracket to accommodate 2 peripherals (monitor cannot be installed).
- Fins for fixing the 10 "power strip (guides width adjustable from 25.7 cm to 34.2 cm).
- Edges with slits for passive dispersion; a fan fixing device in the upper part to increase the air flow; pre-cut profiles for the passage of cables in the lower part of the side (dimensions 13 x 4 cm).
- The roof is equipped with pre-cut slits for cable passage and heat exchange. (size 6.5 x 4 cm).
- The base is equipped with pre-cut slits for cable routing and heat exchange. (size 6.5 x 4 cm).
- 50x50, 75x75, 100x100 VESA attached lower part specified for monitor installation.
- The rear has 11mm spacers for wall mounting.
- External dimensions: 58W x 54,6H x 15D cm.
- Color: White RAL7035. Package Included:
- White video cabinet.



**KAS METAL ELEKTRONİK**

# WALL MOUNT CABINET - SLIMLINE CABINET

## 19" SlimLine Wall Mounting Cabinets

The product range is designed for small offices, homes offices, where a smaller network housing performed. As well decoratively fit product would also be used in horizontal segments of applications, for hotels, hospitals, labratories where a Slim wall application is needed.

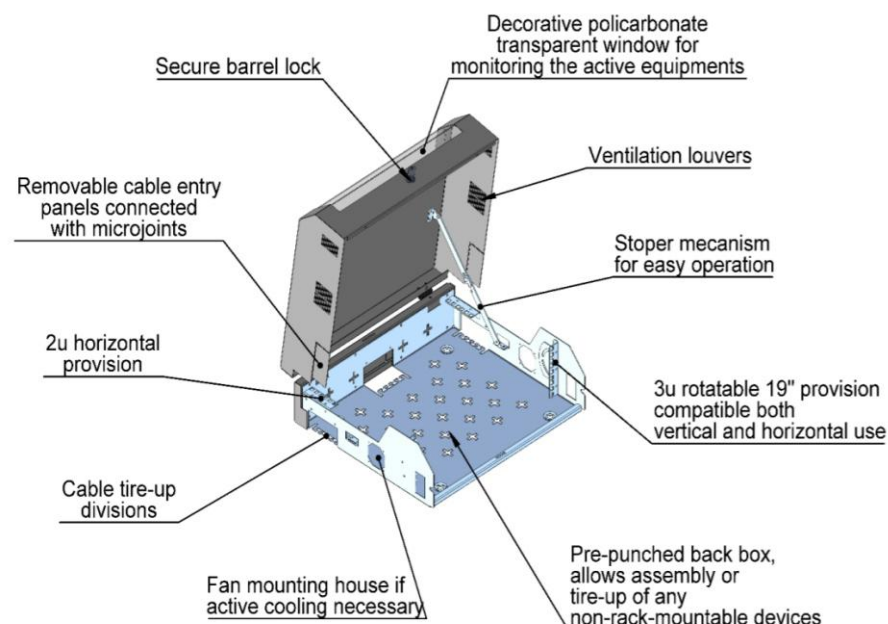
The product with size W:500 mm D:475 mm H:145 mm is allowed to position in suspended ceiling, under raised floor with 600x600 mm raised flooring size, on or under the table, as well different direction of assembly on the wall.

There is also W:500 mm D:766 mm H:145 mm which is equired for deeper switches, routers, or DVR equipments in different purpose of applications.

Multi folded automated bending technology applied monoblock heavy duty structure results to high load capacity of: 40 kgs nominal way.

T=1,5 mm thickness zinc plated 8-12 micron steel back box 1,2 mm thickness eletro static powder coated front section/door with barrel locking and polycarbonate window for monitoring the active equipments.

Front section/door surface is with electrostatic powder coated finish, with fine wrinkle soft touch RAL 7035 Light Grey or RAL 9005 Black Color.



Slim Line Cabinets

ROOT Product Number	Product Description	Size WxDxH mm	h size in U	h in mm	*H mm overall without feet and/or castor	Width Overall mm	Width Rail to Rail	Depth Overall mm	QTY IN PACKAGE	PACKING DIMENTIONS WxDxH mm	Standard NET Weight of product kgs	Gross Weight of Product kgs	QTY IN PALETTE	PALETTE DIMENTIONS WxDxH mm	Palette Weight kgs
305-5047140	2U+3U SlimLine Wall Mounting Cabinet	500x475x145	3U+2U	145	350	500	19"	475	1	520x500x160	8,5	9,5	40	1100x1100x175	400
305-5076140	3U+5U SlimLine Wall Mounting Cabinet	500x760x145	3U+2U	145	635	500	19"	760	1	520x785x160	16	17	15	880x1080x1450	270

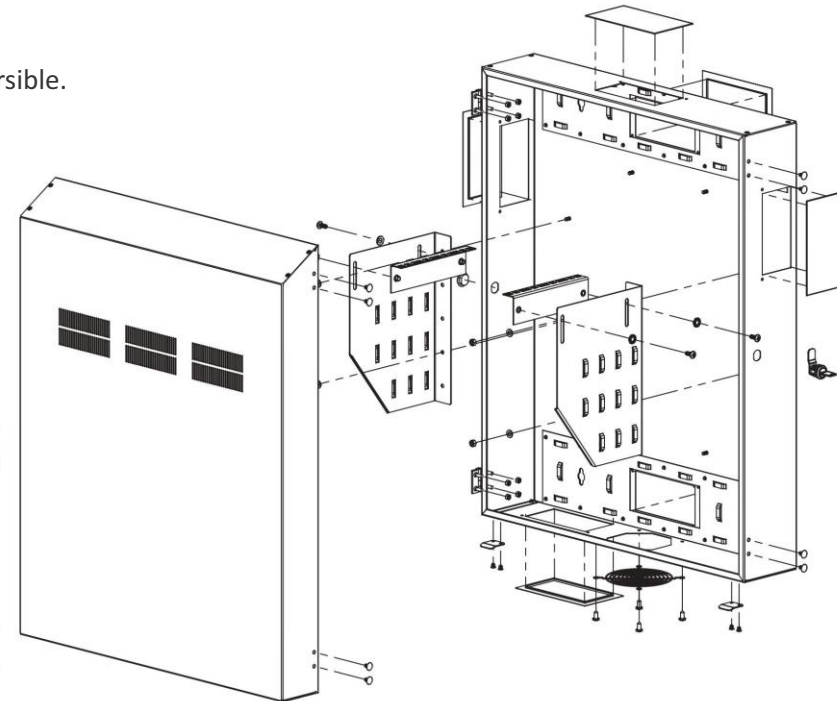
# WALL MOUNT CABINET - SLIMBOX CABINET (SLIM DESIGN)

## SLIMBox Series Wall Mounted 19" Racks W=640mm (SLIM design)

### Features:

- Securely locking hinged body.
- 23" (654 mm) useable equipment depth (vertical)
- Available in two racking heights: 4U and 6U space.
- Punched knockouts in the backpan with plastic cover for cable entry:
  - o Top and bottom – 145 x 70 mm
  - o Right and left – 145 x 70 mm
- Punched knockouts in body of backpan with plastic cover for cable entry 145 x 70 mm
- One bottom located fan mounting position with guard (fan not included.)
- Vented front for cooling.
- The rack rail can be used both for vertical or horizontal directions. Adjustable front rack rail provides 20"-23" useable equipment depth vertically and A"-B" horizontally.
- Available with solid metal front door, or with plexi window on top. Front door swing is reversible.
- Available in a durable texture electrostatic powder paint
  - o 70-90 mm thickness
  - o 500hours of Salt Spray test resistance
  - o Adhesion capability EN ISO 2409: Class 0 to 1
  - o Colors: RAL 7035 or RAL 9005

Max. Loading capacity: 100 kg



SlimBox Series Wall Mounting 19" Racks W=640 mm (SLIM design)

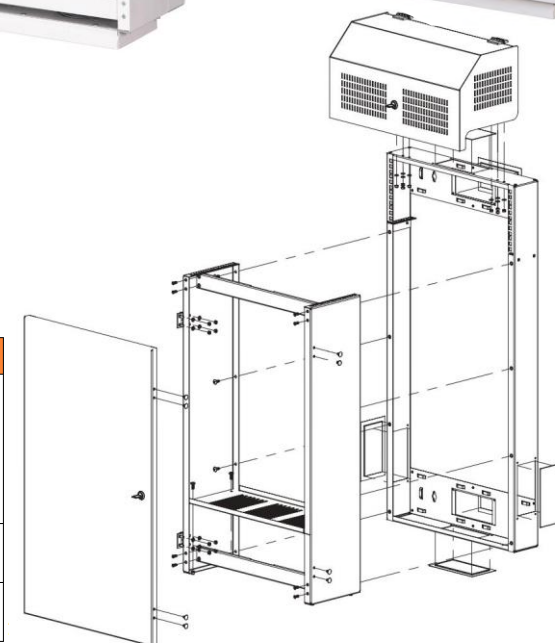
ROOT Product Number	Product Description	Size WXDxH mm	h size in U	QTY IN PACKAGE	PACKING DIMENSIONS WXDxH mm	Standard NET Weight of product kgs	Gross Weight of Product kgs	QTY IN PALETTE	PALETTE DIMENSIONS WXDxH mm	Palette Weight kgs
303-0006-203	4U 19" SlimBox Wall Mounting Cabinet	640x220x800	4U	1	660x230x820	18	20	14	820x1320x1710	280
303-0005-203	6U 19" SlimBox Wall Mounting Cabinet	640x309x800	4U	1	660x320x820	22	24	12	820x1320x2010	288

## WALL MOUNT CABINET - SLIMBOX SERVER CABINET (W=500 mm)

### SLIMBox Series Wall Mounted 19" SERVER Cabinets W=500mm

#### Features:

- Securely locking hinged body for two sections; top and front doors.
- 740 mm usable equipment (server or UPS) depth (vertical)
- Upper bay mounts patch panels and pivots.
- Lower bay mounts server or UPS devices.
- Punched knockouts in the backpan with plastic cover for cable entry:
  - o Top and bottom – 145 x 70 mm
  - o Right and left – 145 x 70 mm
- One bottom located fan mounting position with guard (fan not included.)
- Metal solid welded construction. Sturdy design.
- Vented front and side for cooling.
- Abundant cable tie points included for cable management.
- Available in a durable texture electrostatic powder paint
  - o 70-90 mm thickness
  - o 500 hours of Salt Spray test resistance
  - o Adhesion capability EN ISO 2409: Class 0 to 1
  - o Colors: RAL 7035 or RAL 9005
  - o Max. Loading capacity: 100 kg



SlimBox Series Wall Mounting 19" Server Cabinets W=500 mm

ROOT Product Number	Product Description	Size WxDxH mm	h size in U	QTY IN PACKAGE	PACKING DIMENSIONS WxDxH mm	Standard NET Weight of product kgs	Gross Weight of Product kgs	QTY IN PALETTE	PALETTE DIMENSIONS WxDxH mm	Palette Weight kgs
303-0003-203	4U 19" SlimBox Wall Mounting Server Cabinet	500x310x1050	4U	1	530x330x1110	27	29	14	1300X1800X1100	406
303-0004-203	6U 19" SlimBox Wall Mounting Server Cabinet	500x400x1050	6U	1	530x420x1110	30	32,3	12	1300X1830X1100	387,6

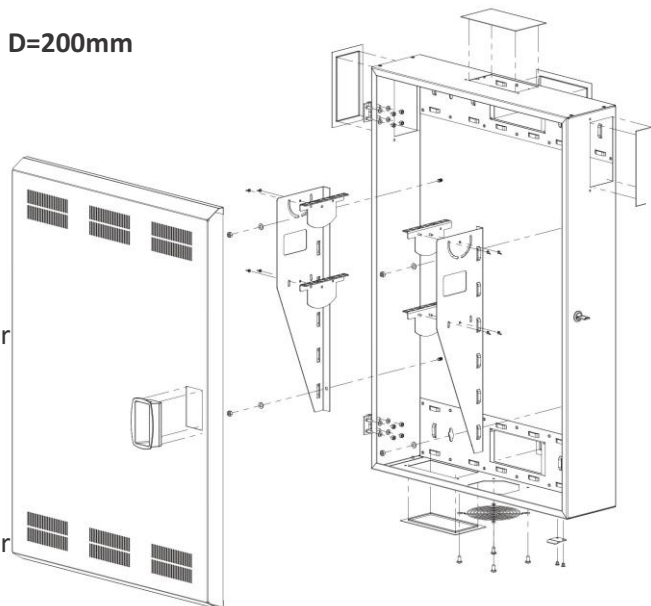
# WALL MOUNT CABINET - SLIMBOX CABINET (DISTRIBUTION RACKS)

SLIMBox Series Wall Mounted 19" Distribution Racks W=640mm D=200mm



## Features:

- Securely locking hinged body.
- Upper bay mounts patch panels and pivots 100"
- Lower bay mounts switches, hubs, routers and pivots.
- Punched knockouts in the backpan with plastic cover for cable entry:
  - o Top and bottom – 145 x 70 mm
  - o Right and left – 145 x 70 mm
- Punched knockouts in body of backpan with plastic cover for cable entry 145 x 70 mm
- One bottom located fan mounting position with guard (fan not included.)
- Vented front for ventilation.
- Abundant cable tie points included for cable management.
- Available in a durable texture electrostatic powder paint
  - o 70-90 mm thickness
  - o 500hours of Salt Spray test resistance
  - o Adhesion capability EN ISO 2409: Class 0 to 1
  - o Colors: RAL 7035 or RAL 9005
  - o Max. Loading capacity: 100 kg



Shown With Equipment in Service Position



## SlimBox Series Wall Mounting 19" Server Cabinets W=500 mm

ROOT Product Number	Product Description	Size WXD <sub>X</sub> H mm	h size in U	QTY IN PACKAGE	PACKING DIMENTIONS WXD <sub>X</sub> H mm	Standard NET Weight of product kgs	Gross Weight of Product kgs	QTY IN PALETTE	PALETTE DIMENTIONS WXD <sub>X</sub> H mm	Palette Weight kgs
303-0007-203	3U Vertical Assembly + 3U Horizontal 19" Wall Mounting Distribution Cabinet	600x200x900	3U	1	620X220X920	17	18,7	14	100X1300X160	261,8

## NETWORK CABINET - FREE STANDING CABINET

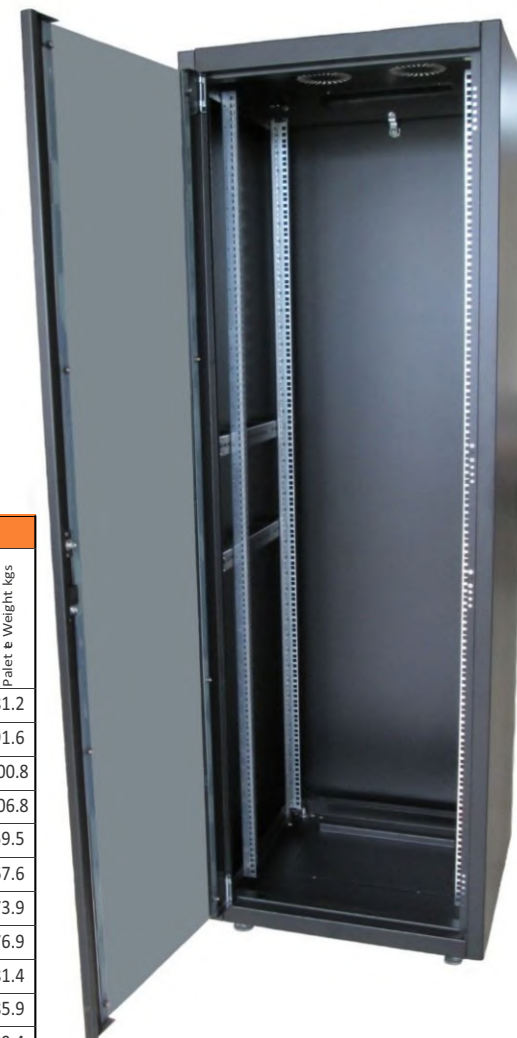


Network cabinet - free standing cabinet;

To help keep your rack-mounted equipment secure, The front and rear doors are both lockable with independent quick-release locks , and the mesh design increases airflow to provide passive cooling. Standard Heights: Networking Cabinet with 19" w:600mm and d:600mm physical sizes, with max internal usable depth and 11 different U height, gives a wide selection chart for users.

**Available in two colors:** (RAL 7035 Light Grey) and (RAL 9005 Black)

**Size:** in different U heights: 12U, 16U, 20U, 22U, 26U, 32U, 36U, 42U, 45U, 47U



Free Standing 19" Cabinets W=600mm D=600mm

ROOT Product Number	Product Description	Size WxDxH mm	h size in U	h in mm	*H mm overall without feet and/or castor	Width Overall mm	Width Rail to Rail	Depth Overall mm	** Depth Shipping Conf. Rail to Rail mm	QTY IN PACKAGE	PACKING DIMENSIONS WxDxH mm	Standard NET Weight of product kgs	Gross Weight of Product kgs	QTY IN PALETTE	PALETTE DIMENSIONS WxDxH mm	Palet e Weight kgs
302-12U6060110-00	12U 19" Free Standing Cabinet W=600mm D=600mm	600x600x676	12U	567	676	600	19"	600	370	1	680x680x810	33.4	40.6	2	680x680x1620	81.2
302-16U6060110-00	16U 19" Free Standing Cabinet W=600mm D=600mm	600x600x854	16U	745	854	600	19"	600	370	1	680x680x980	38.2	45.8	2	680x680x1960	91.6
302-20U6060110-00	20U 19" Free Standing Cabinet W=600mm D=600mm	600x600x1032	20U	923	1032	600	19"	600	370	1	680x680x1160	43.4	50.4	2	680x680x2320	100.8
302-22U6060110-00	22U 19" Free Standing Cabinet W=600mm D=600mm	600x600x1120	22U	1011	1120	600	19"	600	370	1	680x680x1250	45.2	53.4	2	680x680x2500	106.8
302-26U6060110-00	26U 19" Free Standing Cabinet W=600mm D=600mm	600x600x1299	26U	1190	1299	600	19"	600	370	1	680x680x1430	50.9	59.5	1	680x680x1430	59.5
302-32U6060110-00	32U 19" Free Standing Cabinet W=600mm D=600mm	600x600x1565	32U	1456	1565	600	19"	600	370	1	680x680x1590	58.5	67.6	1	680x680x1590	67.6
302-36U6060110-00	36U 19" Free Standing Cabinet W=600mm D=600mm	600x600x1743	36U	1634	1743	600	19"	600	370	1	680x680x1870	64.7	73.9	1	680x680x1870	73.9
302-39U6060110-00	39U 19" Free Standing Cabinet W=600mm D=600mm	600x600x1876	39U	1767	1876	600	19"	600	370	1	680x680x2000	66.8	76.9	1	680x680x2000	76.9
302-42U6060110-00	42U 19" Free Standing Cabinet W=600mm D=600mm	600x600x2009	42U	1900	2009	600	19"	600	370	1	680x680x2130	71.2	81.4	1	680x680x2130	81.4
302-45U6060110-00	45U 19" Free Standing Cabinet W=600mm D=600mm	600x600x2143	45U	2034	2143	600	19"	600	370	1	680x680x2270	75.4	85.9	1	680x680x2270	85.9
302-47U6060110-00	47U 19" Free Standing Cabinet W=600mm D=600mm	600x600x2232	47U	2123	2232	600	19"	600	370	1	680x680x2360	78.9	89.4	1	680x680x2360	89.4

## METAL ENCLOSURE - FREE STANDING COUNTER PANEL



Free standing counter panels are used in buildings, apartment sites, workplaces.

### Free Standing Type Counter Panels

Product Code	Product Description	Size WXDxH mm
SY06DKL	4-5-6 Counter 200mm Base	1510x750x250
SY09DKL	7-8-9 Counter 200mm Base	1510x950x250
SY12DKL	10-11-12 Counter 200mm Base	1510x1150x250
SY15DKL	13-14-15 Counter 200mm Base	1510x1350x250
SY18DKL	16-17-18 Counter 200mm Base	1510x1550x250
SY21DKL	19-20-21 Counter 200mm Base	1510x1750x250
SY24DKL	22-23-24 Counter 200mm Base	1510x1500x250
SY28DKL	25-26-27-28 Counter 200mm Base	1510x1750x250

### Standing Type Type Meter Enclosures 4 Tiers

Product Code	Product Description	Size WXDxH mm
SY08DKL-4	4-5-6 Counter 200mm Base	1930x750x250
SY12DKL-4	7-8-9 Counter 200mm Base	1930x950x250
SY16DKL-4	10-11-12 Counter 200mm Base	1930x1150x250
SY20DKL-4	13-14-15 Counter 200mm Base	1930x1350x250
SY24DKL-4	16-17-18 Counter 200mm Base	1930x1450x250

## METAL ENCLOSURE - METER BOARD

Meter boards are electrical panels for use in buildings, apartment sites, workplaces.

### Single Counter Panel

Product Code	Product Description	Size WXD <sub>X</sub> H mm
SY01TK01-01	1 Three Phase Counter with Compact Output	785x250x150
SY01TK01-02	1 Three Phase Counter Column Fused	450x250x150
SY01TK01-03	2 Three Phase Counter Column With Fused Roof	450x250x150
SY01TK01-04	1 Three Phase Meter with 7+8 Fuse Outputs	580x250x150

### Wall Mounted Counter Panels

Product Code	Product Description	Size WXD <sub>X</sub> H mm
SY02DVR	2 Three Phase Meter Wall Type Flush Mounted	910x500x155
SY04DVR	4 Three Phase Meter Wall Type Flush Mounted	910x700x155
SY06DVR	6 Three Phase Meter Wall Type Flush Mounted	910x900x155
SY08DVR	8 Three Phase Meter Wall Type Flush Mounted	910x1100x155
SY10DVR	10 Three Phase Meter Wall Type Flush Mounted	910x1300x155
SY12DVR	12 Three Phase Meter Wall Type Flush Mounted	910x1500x155



## METAL ENCLOSURE - SATELLITE AND DATA CROWN ENCLOSURE

Satellite and data crown enclosure is used in buildings.

Entry is provided from the outside outline.

Data is distributed from the dashboard to the flats in the building.



**3U  
ENCLOSURE**



**6U  
ENCLOSURE**



Telecom Clipboard		
Product Code	Product Description	Size WXDxH mm
DA307310	Indoor Telephone Flush Mounted 16 Pcs Fuse Board	300x700x101
DA303510	Indoor Telephone Panel Flush Mounted	300x350x100
DU303510	Indoor Telephone Panel Surface Mounted	300x350x100
BN353010	Indoor Telephone Board 1-8 Flats Recessed	350x300x100
BN474010	Indoor Telephone Board 9 -32 Flats Recessed	470x400x100
DA244414	In-flat telephone flush mounted	240x440x140

## METAL BOARD - AGRICULTURAL IRRIGATION BOARD



### Agricultural irrigation board.

With dimensions of 800x600x400 mm, suitable for outdoor environments, with roof, with feet. There is a reactive power indicator place. Suitable mounting areas are available for other electrical materials.

**Type:** Horizontal agricultural enclosure with field type mounting plate.

**Size:** 800x600x400 mm

**Color:** RAL 7035 light gray



### Horizontal Agricultural Enclosure With Field Type Mounting Plate

Product Code	Product Description	Size WXDxH mm
TS604515	7 pcs. with 1 Three Phase Counter. Fuse +Pako Output Mounting Plate Roof	600x450x150
TS806040	Agricultural Irrigation Panel Tray Meter Roof Panel with Mounting Plate	800x600x400
TS1008040	Agricultural Irrigation Panel Tray Meter Roof Panel with Mounting Plate	1000x800x400
TS1408040	Agricultural Irrigation Panel Tray Meter Roof Panel with Mounting Plate	1400x800x400
TS1005535	Agricultural Irrigation Panel Tray Meter Roof Panel with Mounting Plate	1000x550x350
TS1007535	Agricultural Irrigation Panel Tray Meter Roof Panel with Mounting Plate	1000x750x350
TS1009040	Agricultural Irrigation Panel Tray Meter Roof Panel with Mounting Plate	1000x900x400

## 6/8 PORT WALL MOUNT TERMINATION BOXES



**6 PORT WALL MOUNT TERMINATION BOX**



**8 PORT WALL MOUNT TERMINATION BOX**

These simple network termination boxes accelerate network deployment and simplify moves, adds and changes.

They come in a variety of sizes to suit the space needs and provide superior cable management.

Used for Fiber optic termination

ST, SC, LC options are available

Lockable front door

Plastic cable gland PG16 (1 unit) is equipped

Standard color RAL 9005 black and RAL 7035 light grey color are available

## RACK ACCESSORIES: PATCH PANELS



**19" PIVOTING PATCH PANEL**

**19" Pivoting Patch Panel and Fiber optic patch panel** are used to terminate the fiber cables and connect multiple optical fiber cables and optical equipment. Patch panels are rack-mountable onto 19" rack systems. Patch cords manage small and large amounts of fibers with high capacity. With cable glands, fiber comes safely; it allows very little movement.

1U starts from 12 ports to 36 ports

2U starts from 48 ports to 72 ports

The standard color is 9005 black. In addition, the RAL 7035 can be produced in light grey.

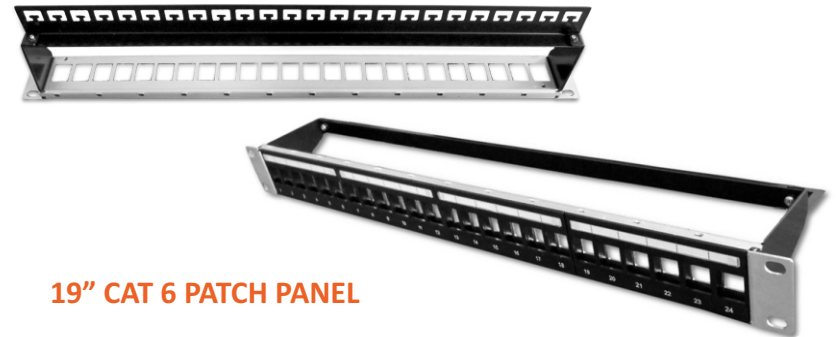


**19" FIBER OPTIC PATCH PANEL**



**CAT6 Patch Panels** are mounted hardware units containing an assembly of RJ45 ports in a communications or other electronic or electrical rack mount chassis. In a network, a Patch Panel serves as a sort of static switchboard, using cables to interconnect computers within the area of a local area network (LAN) and to the outside for connection to the Internet or other wide area network (WAN). The front of the patch panel allows easy access to connect the different equipment with the use of short patch cables.

1U 24 port CAT 6 Patch Panel



**19" CAT 6 PATCH PANEL**

## RACK ACCESSORIES: CABLE MANAGEMENT

### 19" Hook Cable Management;

The size of managers – 1U and 2U.

Standard colors: RAL 9005 black and RAL 7035 light grey.



### 19" Brush Cable Management;

The size of managers – 1U.

Standard colors: RAL 9005 black and RAL 7035 light grey.



### 19" Cable Management with Sliding Cover;

The size of managers – 1U and 2U.

Standard colors: RAL 9005 black and RAL 7035 light grey.



### 19" Cable Management with Clips Cover;

The size of managers – 1U.

Standard colors: RAL 9005 black and RAL 7035 light grey.



### Cable Management Rings;

The size of managers – 160x67 mm

Standard colors: RAL 9005 black and RAL 7035 light grey.



### 1U-2U Cable Management;

Provide neat and efficient way to manage cables on standard 19" rack or cabinet. The size of managers – 1U and 2U.

Standard colors: RAL 9005 black and RAL 7035 light grey.

There are different varieties of organizers such as cable managers with hoops, brush, clips and single sided managers.

-brush cable management  
-hook cable management

-cable management with clips cover  
-cable management with sliding cover

## RACK ACCESSORIES: BLANK CABLE MANAGEMENT PANELS

### Flat Blank Panel;

The size of managers – 1/2U, 1U, 2U, 3U, 4U, 5U, 6U.

Standard colors: RAL 9005 black and RAL 7035 light grey.



### Patchcord Carrier Brush Blank Panel;

The size of managers – 1/2U, 1U.

Standard colors: RAL 9005 black and RAL 7035 light grey.



### Vented Blank Panel;

The size of managers – 1U, 2U, 3U, 4U, 5U, 6U.

Standard colors: RAL 9005 black and RAL 7035 light grey.



### Brush Panel;

The size of managers – 1/2U, 1U.

Standard colors: RAL 9005 black and RAL 7035 light grey.



### Blank Panels;

Suitable for all standard 19" cabinets.

Blank panels are available in different sizes from 1/2U to 6U.

They are used to present a tidy appearance and improve cooling.

Can be used to cover the gaps between rack mount equipment and cause a change in airflow through the rack and across the components.

Some racks can experience more than twice the strength and ruggedness by simply installing Spacer Blanks at regular intervals.

-flat blank panel  
-vented blank panel

-brush panel  
-patchcord carrier brush blank panel



## ABOUT US

*Kasmetal Electronic was launched in 2008 in Eskisehir by starting with only one press machine. Today, it serves with talented team and the latest CNC machines. Kasmetal provides high-quality products to its customers with the help of the following machines: laser cutting, turret punch, bending, eccentric and hydraulic presses together with gas welding machine. Final products being painted in the electrostatic paint room and having met all international standard criteria are served to the market.*

*Kasmetal has started its path in the industry by the production of perforated doors. Nowadays, it has proven itself in many fields. Our cabinet accessories help to organize and manage cables in the rack cabinets where you store your data. Therefore, 19 " fiber-optic and wall type patch panels are among the essential products in the era of communications. Moreover, we outsource production of cabinets to leading companies in this sector like Lande, Canovate, and Inform.*

*At the same time, we produce electric and construction panels, metal boxes, kiosk panels and various laser cut designs under the brand name Kastap.*

**Our mission:** providing quality for the competitive price. Delivering on time is one of our main policies. **Our vision:** constantly increasing production speed. Continuing to improve ourselves by the satisfaction of our customers.



[www.kasmetalelektronik.com](http://www.kasmetalelektronik.com)

**CONTACT US:**

**Export Manager: Fatma ALUÇ ŞİMŞEK**

**Phone: +90 553 295 66 22**

**e-mail: [fatma.aluc@kasmetalelektronik.com](mailto:fatma.aluc@kasmetalelektronik.com)**

**Organize Sanayi Bölgesi Emko Sanayi Sitesi E9 Blok No:1 Eskişehir/Turkey**